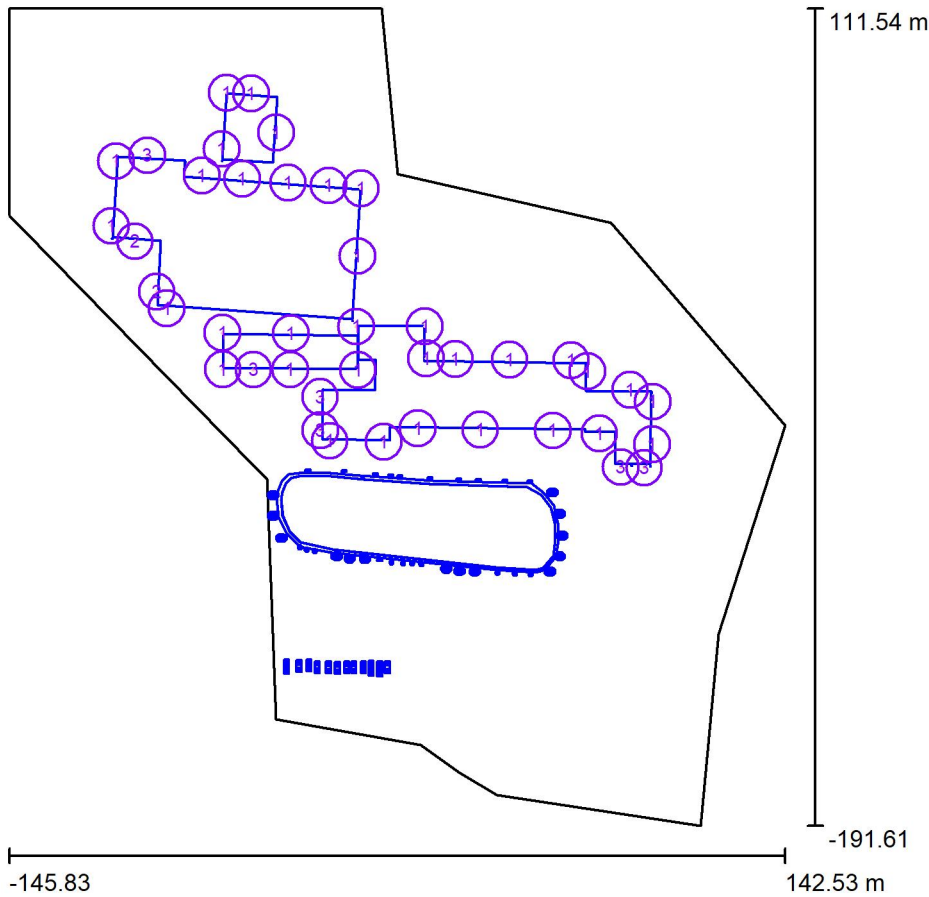




Operator
Telephone
Fax
e-Mail

Exterior Scene 1 / Planning data



Maintenance factor: 0.90, ULR (Upward Light Ratio): 3.0%

Scale 1:2810

Luminaire Parts List

No.	Pieces	Designation (Correction Factor)	Φ (Luminaire) [lm]	Φ (Lamps) [lm]	P [W]
1	34	LED-STREET-3713-108-1-40-Y1-5000K-6840lm LUW JDSH.EC DURIS E5 (1.000)	6840	6840	40.0
2	2	LED-STREET-3713K-162-1-60-Y1-5000K-10260lm LUW JDSH.EC DURIS E5 (1.000)	10260	10260	60.0
3	6	LED-STREET-3713K-216-1-80-Y1-5000K-13680lm-LUW JDSH.EC DURIS E5 (1.000)	13681	13680	80.0
Total:			335175	335160	1960.0



Operator
Telephone
Fax
e-Mail

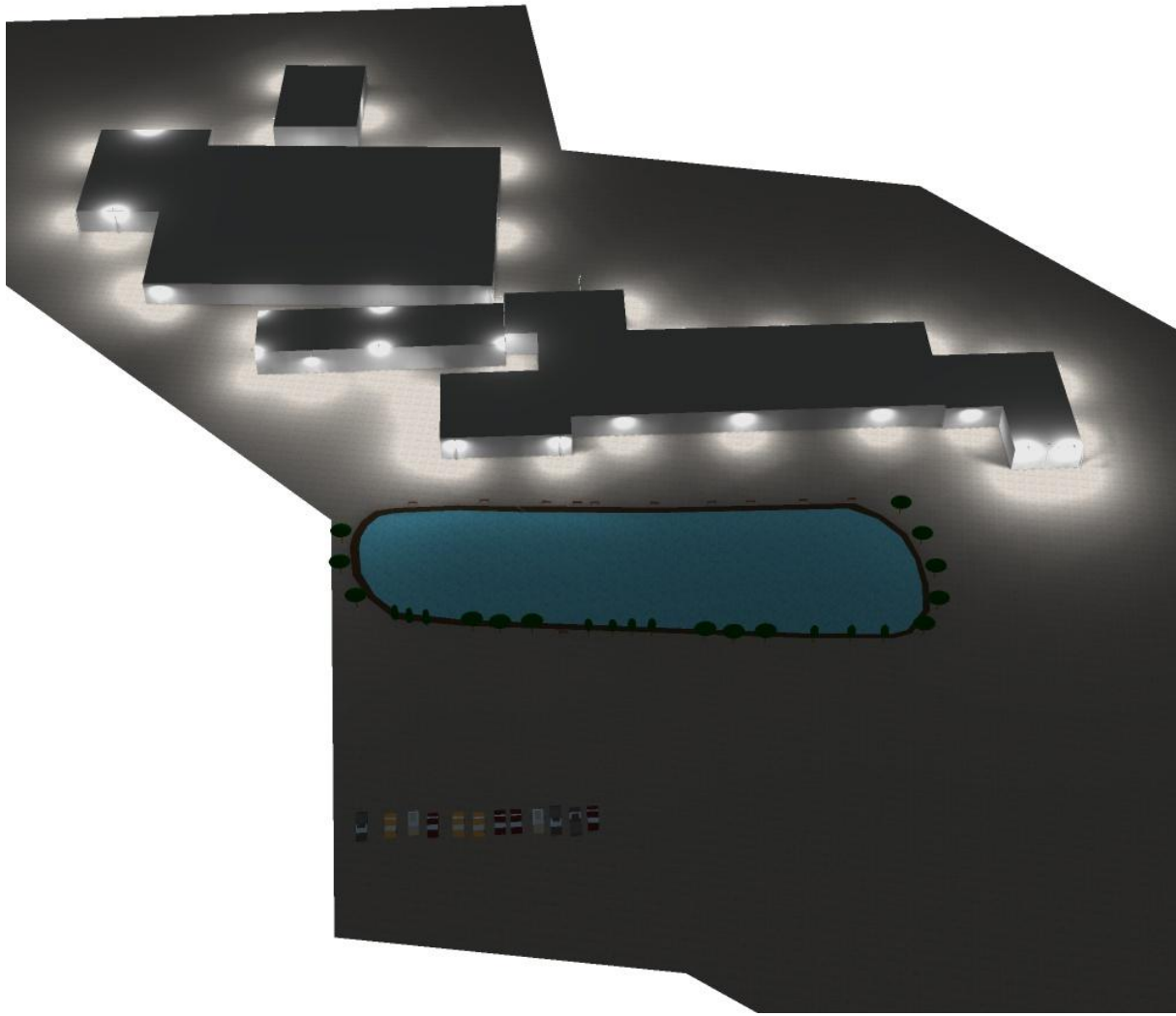
Exterior Scene 1 / Luminaire parts list

34 Pieces	<p>LED-STREET-3713-108-1-40-Y1-5000K-6840lm LUW JDSH.EC DURIS E5 Article No.: LED-STREET-3713-108-1-40-Y1-5000K-6840lm LUW JDSH.EC Luminous flux (Luminaire): 6840 lm Luminous flux (Lamps): 6840 lm Luminaire Wattage: 40.0 W Luminaire classification according to CIE: 100 CIE flux code: 47 79 96 100 100 Fitting: 108 x LED (Correction Factor 1.000).</p>	<p>See our luminaire catalog for an image of the luminaire.</p>	
2 Pieces	<p>LED-STREET-3713K-162-1-60-Y1-5000K-10260lm LUW JDSH.EC DURIS E5 Article No.: LED-STREET-3713K-162-1-60-Y1-5000K-10260lm LUW JDSH.EC Luminous flux (Luminaire): 10260 lm Luminous flux (Lamps): 10260 lm Luminaire Wattage: 60.0 W Luminaire classification according to CIE: 100 CIE flux code: 47 79 96 100 100 Fitting: 162 x LED (Correction Factor 1.000).</p>	<p>See our luminaire catalog for an image of the luminaire.</p>	
6 Pieces	<p>LED-STREET-3713K-216-1-80-Y1-5000K-13680lm-LUW JDSH.EC DURIS E5 Article No.: LED-STREET-3713K-216-1-80-Y1-5000K-13680lm-LUW JDSH.EC Luminous flux (Luminaire): 13681 lm Luminous flux (Lamps): 13680 lm Luminaire Wattage: 80.0 W Luminaire classification according to CIE: 100 CIE flux code: 47 79 96 100 100 Fitting: 216 x LED (Correction Factor 1.000).</p>	<p>See our luminaire catalog for an image of the luminaire.</p>	



Operator
Telephone
Fax
e-Mail

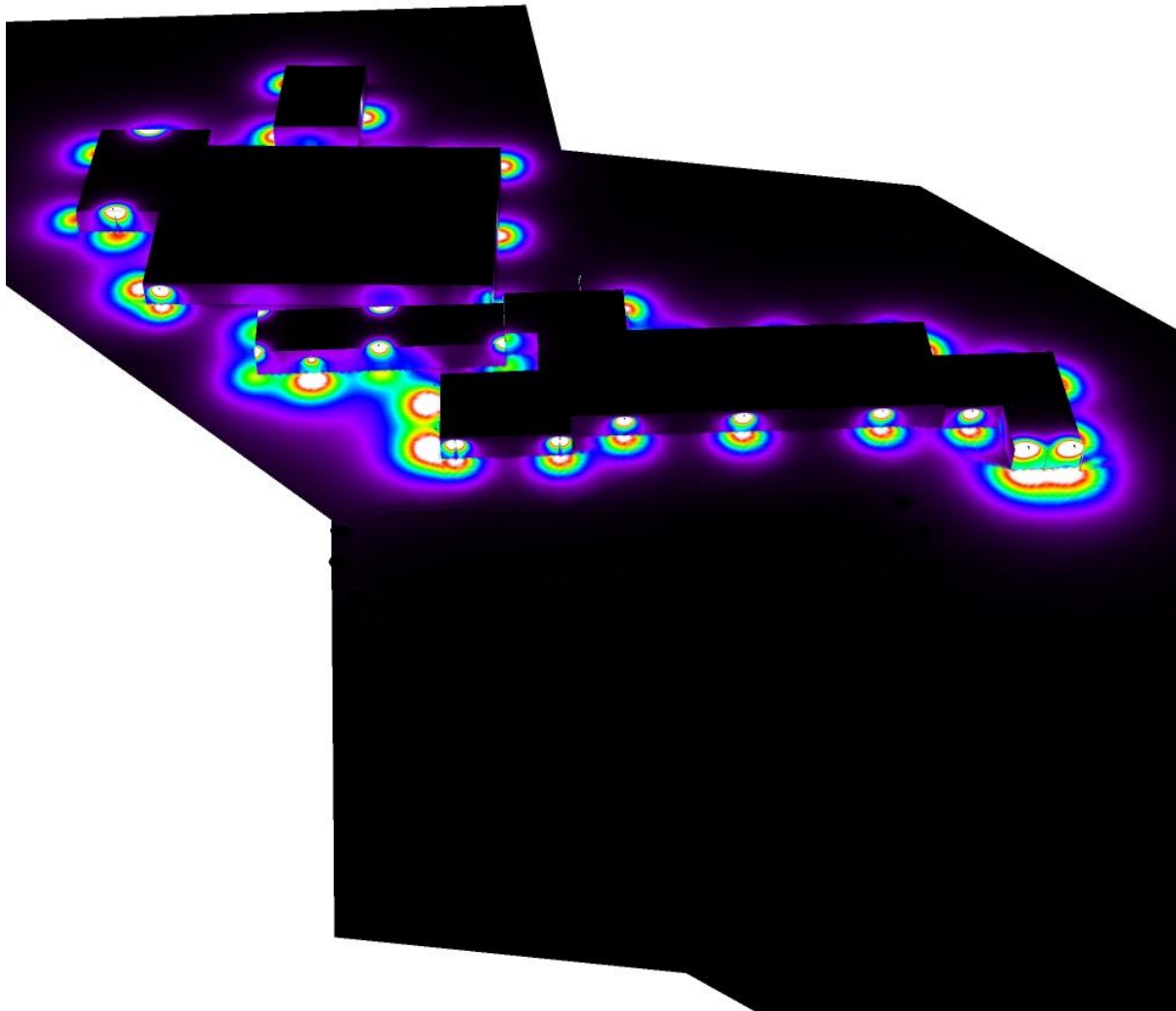
Exterior Scene 1 / 3D Rendering





Operator
Telephone
Fax
e-Mail

Exterior Scene 1 / False Colour Rendering

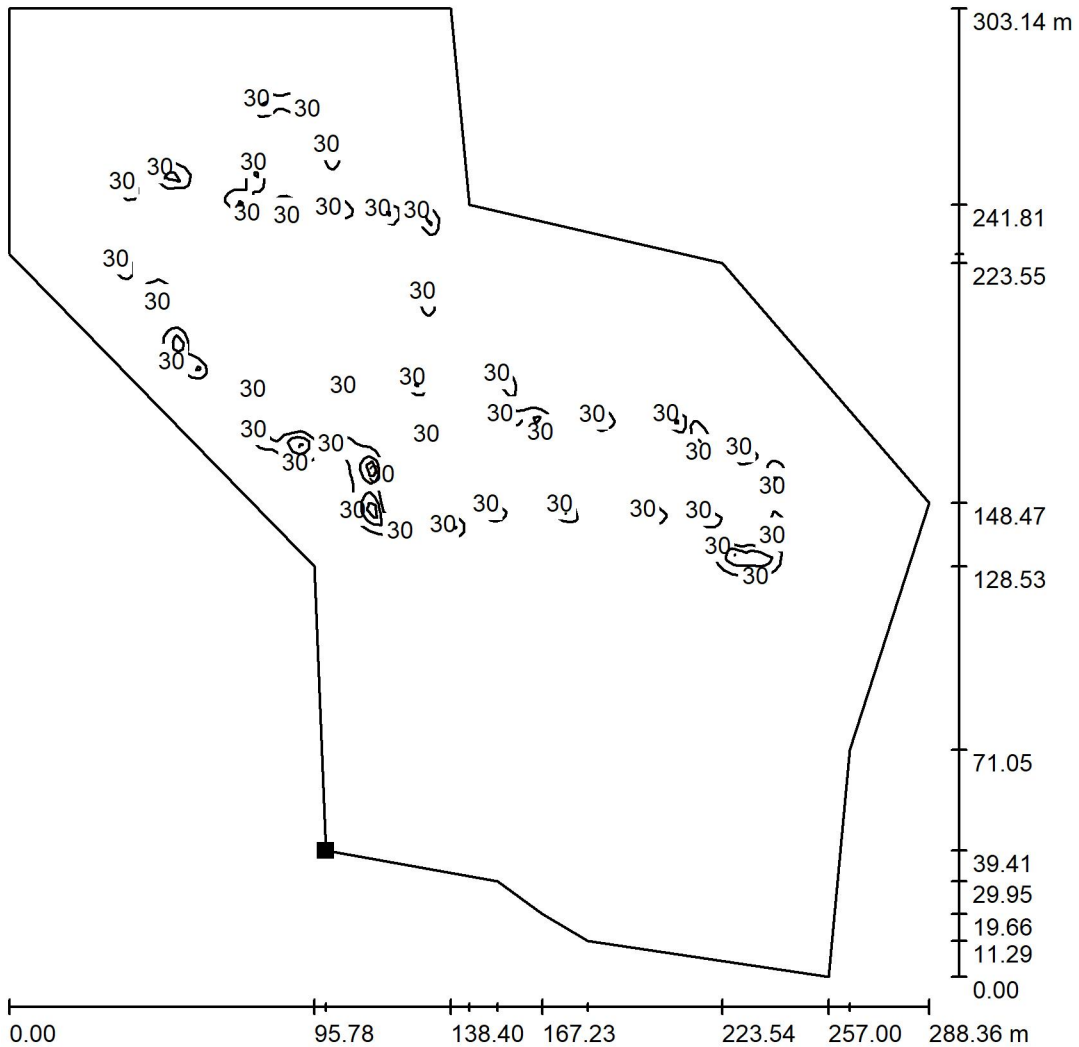


0 10 20 30 40 50 60 70 80 lx



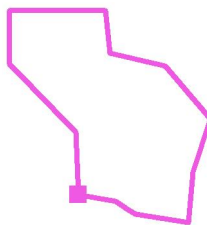
Operator
Telephone
Fax
e-Mail

Exterior Scene 1 / Ground Element 1 / Surface 1 / Isolines (E)



Values in Lux, Scale 1 : 2371

Position of surface in external scene:
Marked point:
(-46.561 m, -152.193 m, 0.000 m)



Grid: 128 x 128 Points

E_{av} [lx]	E_{min} [lx]	E_{max} [lx]	u0	E_{min} / E_{max}
3.77	0.00	136	0.000	0.000